

87-15450

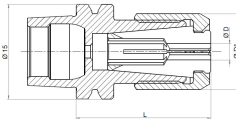
## TOOLHOLDERS FOR MICRO-MACHINING ATC-E15

SCHAUBLIN presents the new line of toolholders with ATC-E15 spindle interface. The ATC (Automatic Tool Change) interface is dedicated to specific high speed spindles compact in dimensions, allowing precise machining in miniature applications.

### D-COLLET



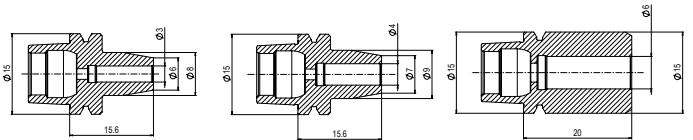
Item number	Item description	D	L	D1
87-15001	Collet chuck ATC-E15 D8	-	22	14
87-15000	Collet chuck ATC-E15 D10	-	26.5	14
74-8000	Collet D8 UP	0.5-6.0	-	-
74-10000	Collet D10 UP	0.5-5.0	-	-
68-8706	Nut D8	-	-	-
68-10708	Nut D10	-	-	-



### SHRINK-FIT



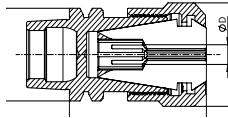
Item number	Item description	D
87-15450	Heat shrink-fit ATC-E15	3.0
87-15451	Heat shrink-fit ATC-E15	4.0
87-15452	Heat shrink-fit ATC-E15	6.0



### EX-COLLET



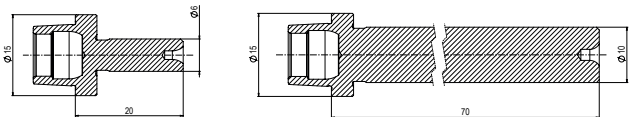
Item number	Item description	D
87-15050	Collet chuck ATC-E15 EX12	-
75-12300	Collet ESX12	1.0 - 7.0
75-12200	Collet EX12 UP	0.5 - 7.0
61-12710	Nut EX12	-



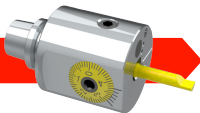
### GAUGES



Item number	Item description
87-15750	Balancing gauge ATC-E15
87-15700	Inspection arbor ATC-E15

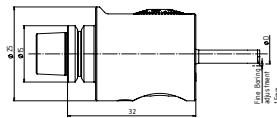


### BORING HEAD



**SWISS TOOLS**  
SCHAUBLIN

Item number	Item description	D
HE1A19.AA4.023	Micro boring head ATC-E15	-
273.004.003	Boring bar	0.3 - 0.7
273.004.006	Boring bar	0.6 - 1.1
273.004.010	Boring bar	1.0 - 2.3
273.004.022	Boring bar	2.2 - 3.3
273.004.032	Boring bar	3.2 - 4.3
273.004.039	Boring bar	3.9 - 7.1



### BLANK



Item number	Item description
87-15720	Blank ATC-E15

