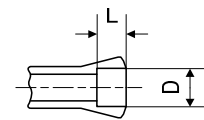


**Pinces tirées - Zugspannzangen - Pull-type collets**



Alésage à cran  
 Stufenbohrung  
 Step bore



Type	Art.	A	B	C	E	G	$\alpha$	D min-max	L	Fig.	
W25	<b>80-5</b>	25	33.7	97.6	-	$\emptyset 24.7 \times 1.693$	$45^\circ/5^\circ$	15°	0.30...19.05	-	1
									19.06...21.00	35	
									21) 21.01...21.50	16.5	
									21) 21.51...22.00	16	
									21) 22.01...23.00	15.5	
									21) 23.01...23.50	15	
									21) 23.51...24.00	14.5	
									21) 24.01...24.50	13.5	
									21) 24.51...25.00	12.5	
									21) 25.01...25.40	11.5	
									25.41...25.50	11.5	
									25.51...26.00	10.5	
							26.01...26.50	9.5			
							26.51...27.00	8.5			
							27.01...27.50	7.5			
							27.51...28.00	6.5			
							28.01...28.50	5.5			
							28.51...29.00	4.5			
	<b>80-700</b> 10) 80-5	25	33.7	97.6	-	$\emptyset 24.7 \times 1.693$	$45^\circ/5^\circ$	15°	21.01...25.40	30	2
	<b>80-1923</b>	25	35	94	-	M25x1		16°	0.50...17.00	-	3

Alésages standards (rond, carré, six-pans) selon liste de prix. Autres alésages sur demande.  
 Standardbohrungen (rund, vierkant, sechskant) gemäss Preisliste. Andere Bohrungen auf Anfrage.  
 Standard bores (round, square, hexagonal) according to price list. Other bores on request.

10) Article de base - Basisartikel - Basic item

21) Dimensions non standard, voir 80-700 - Keine Standardabmessung, siehe 80-700 -  
 Non standard bores, see 80-700