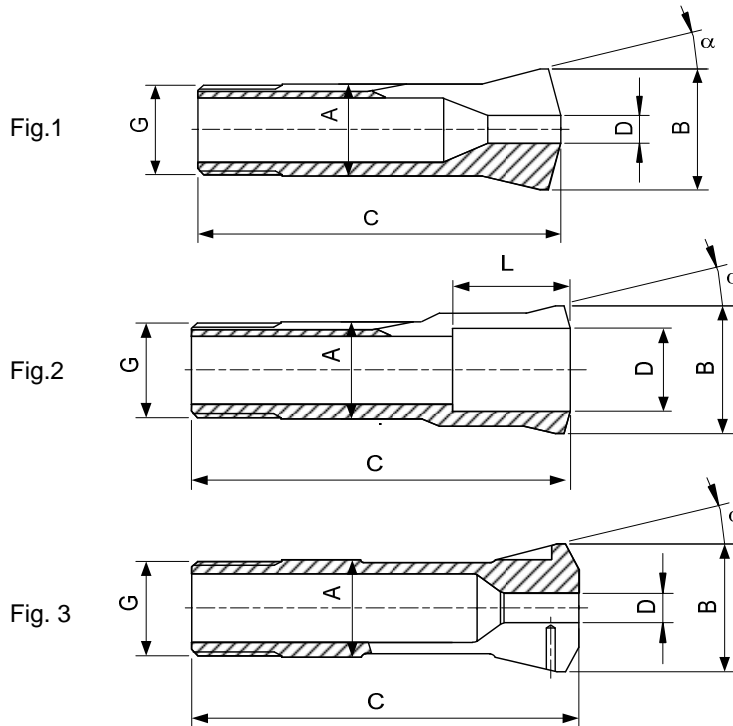
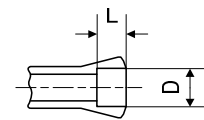


Pinces tirées - Zugspannzangen - Pull-type collets



Alésage à cran
 Stufenbohrung
 Step bore



Type	Art.	A	B	C	E	G	α	D min-max	L	Fig.
W25	80-5	25	33.7	97.6	-	$\emptyset 24.7 \times 1.693 \nabla 45^\circ/5^\circ$	15°	0.30...19.05	-	1
								19.06...21.00	35	
								21) 21.01...21.50	16.5	
								21) 21.51...22.00	16	
								21) 22.01...23.00	15.5	
								21) 23.01...23.50	15	
								21) 23.51...24.00	14.5	
								21) 24.01...24.50	13.5	
								21) 24.51...25.00	12.5	
								21) 25.01...25.40	11.5	
								25.41...25.50	11.5	
								25.51...26.00	10.5	
								26.01...26.50	9.5	
						26.51...27.00	8.5			
						27.01...27.50	7.5			
						27.51...28.00	6.5			
						28.01...28.50	5.5			
						28.51...29.00	4.5			
	80-700 10) 80-5	25	33.7	97.6	-	$\emptyset 24.7 \times 1.693 \nabla 45^\circ/5^\circ$	15°	21.01...25.40	30	2
	80-1923	25	35	94	-	M25x1	16°	0.50...17.00	-	3

Alésages standards (rond, carré, six-pans) selon liste de prix. Autres alésages sur demande.
 Standardbohrungen (rund, vierkant, sechskant) gemäss Preisliste. Andere Bohrungen auf Anfrage.
 Standard bores (round, square, hexagonal) according to price list. Other bores on request.

10) Article de base - Basisartikel - Basic item

21) Dimensions non standard, voir 80-700 - Keine Standardabmessung, siehe 80-700 -
 Non standard bores, see 80-700