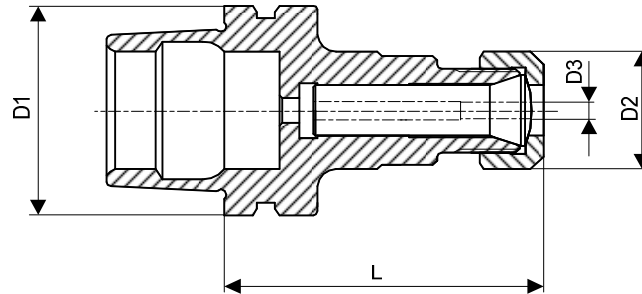
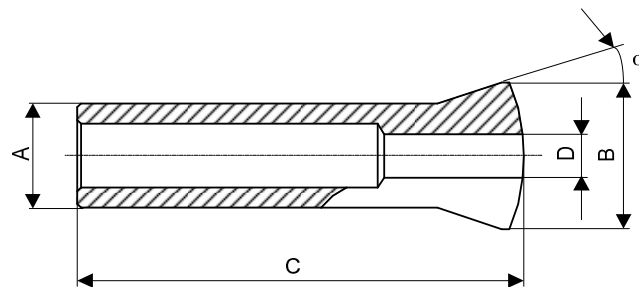


**Porte-pinces F - Spannzangenhalter F - Collet chucks F**



| D1      | Art.     | D2 | D3       | L    | Pince<br>Spannzange<br>Collet | Ecrou<br>Mutter<br>Nut |
|---------|----------|----|----------|------|-------------------------------|------------------------|
| HSK-E25 | 87-25052 | 14 | 1.0-4.76 | 34.6 | 76-1868                       | 68-11870               |

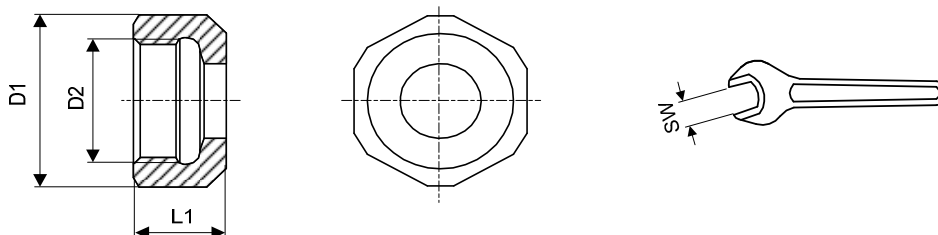
**Pince - Spannzange - Collet**



| Type | Art.    | A | B   | C    | $\alpha$ | D min.-max. |
|------|---------|---|-----|------|----------|-------------|
| F6   | 76-1868 | 6 | 8.5 | 23.8 | 20°      | 1.00...4.76 |

Alésages standards selon liste de prix - Standardbohrungen gemäss Preisliste - Standard bores according to price list  
 Autres alésages sur demande - Andere Bohrungen auf Anfrage - Other bores on request

**Ecrou - Mutter - Nut**



| Gr. | Art.     | D1 | D2       | L1 | SW |
|-----|----------|----|----------|----|----|
| F6  | 68-11870 | 14 | M10x0.75 | 7  | 13 |