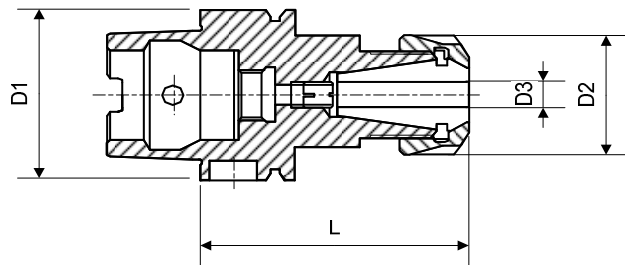


Porte-pinces E court - Spannzangenhalter E kurz - Collet chucks E short



équilibré
ausgewuchtet
balanced

voir page 105.2
nach Seite 105.2
see page 105.2

caractères gras : inclus dans la livraison
Fettschrift : im Lieferumfang inbegriffen
bold script : included in delivery

| | | | |
|---|--------------|---|----------|
| M | DIN 6499 A+B | pince Spannzange collet | Page 221 |
| N | DIN 6499 D | écrou Mutter nut | Page 223 |
| | | écrou équilibré ausgewuchtete Mutter balanced nut | Page 224 |
| O | | clé pour l'écrou Mutternschlüssel spanner for the nut | Page 223 |
| P | | vis de réglage Anschlagschraube adjusting screw | |
| Q | | raccord d'arrosage Kühlmittelrohr coolant fitting | Page 137 |

| D1 | Art. | D2 | D3 | L | M | N | O | P | Q |
|---------|------------------------|------|--------|-----|-----------------------------------|----------|----------|-----------------|----------|
| HSK-A32 | 87-32221 26) | 17 | 0.5-7 | 50 | 75-12200 75-12300 ET1-12... | 61-12710 | - | 87-90019 | 87-32904 |
| | 87-32222 | 25 | 0.5-10 | 60 | 75-16200 75-16300 ET1-16... | 61-16710 | - | 87-90019 | 87-32904 |
| HSK-A40 | 87-40222 | 25 | 0.5-10 | 65 | 75-16200 75-16300 ET1-16... | 61-16710 | - | 87-90016 | 87-40904 |
| | 87-40223 | 30.5 | 0.5-13 | 71 | 75-20200 75-20300 ET1-20... | 61-20710 | - | 87-90016 | 87-40904 |
| | 87-40225 | 42 | 0.5-16 | 52 | 75-25200 75-25300 ET1-25... | 61-25730 | 61-25800 | | |
| | 87-40224 | 42 | 0.5-16 | 74 | 75-25200 75-25300 ET1-25... | 61-25730 | 61-25800 | 87-90016 | 87-40904 |
| HSK-A50 | 87-50224 | 42 | 0.5-16 | 78 | 75-25200 75-25300 ET1-25... | 61-25730 | 61-25800 | 87-90016 | 87-50904 |
| | 87-50225 | 50 | 1.5-20 | 86 | 75-32200 75-32300 ET1-32... | 61-32730 | 61-32800 | 87-90016 | 87-50904 |
| HSK-A63 | 87-63222 | 25 | 0.5-10 | 75 | 75-16200 75-16300 ET1-16... | 61-16710 | - | 61-16903 34) | 87-63904 |
| | 87-63224 | 42 | 0.5-16 | 80 | 75-25200 75-25300 ET1-25... | 61-25730 | 61-25800 | 61-16903 34) | 87-63904 |
| | 87-63225 | 50 | 1.5-20 | 100 | 75-32200 75-32300 ET1-32... | 61-32730 | 61-32800 | 87-90015 | 87-63904 |
| | 87-63226 | 63 | 2-26 | 100 | 75-40200 75-40300 ET1-40... | 61-40730 | 61-40800 | 87-90015 | 87-63904 |

34) Pour montage dans 87-63904 - Für Montage in 87-63904 - For assembly in 87-63904

26) Sur demande - Auf Anfrage - On request