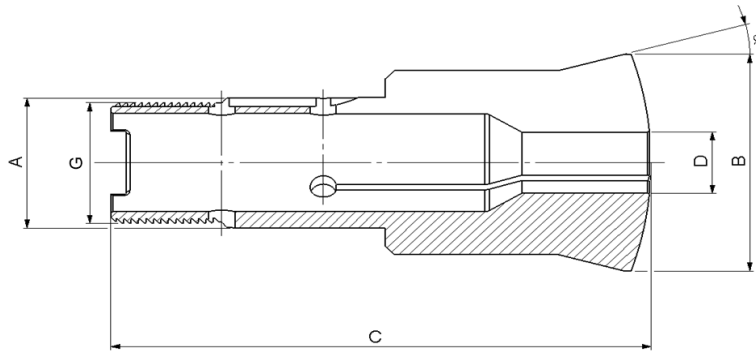


Pinces tirées - Zugspannzangen - Pull-type collets

Fig. 1



Alésage à cran
 Stufenbohrung
 Step bore

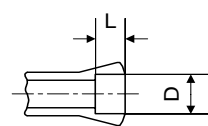
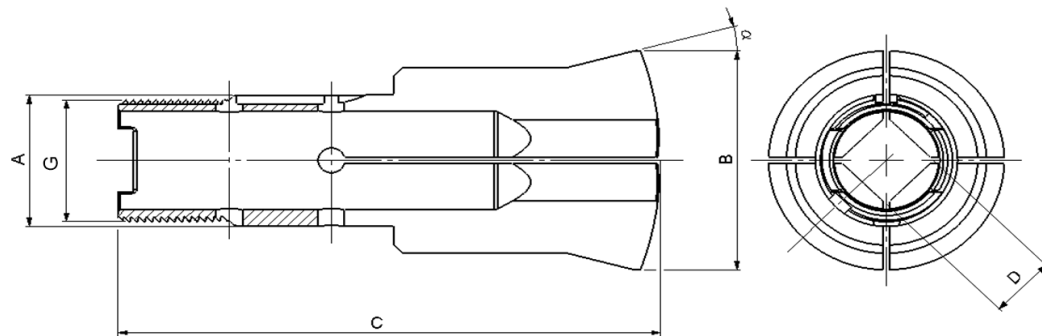


Fig. 2



Type	Art.	A	B	C	G	α	D min.-max	L	Fig.
HB32/45	72-2033	32	53	122	\emptyset 29.7x1.693	\sphericalangle 45°/5°	15°	-	1
								3.00...23.79	-
								23.80...40.99	50
								41.00...41.99	14
								42.00...42.99	12
								43.00...43.99	10
	44.00...45.00	8							
	72-2043	32	53	122	\emptyset 29.7x1.693	\sphericalangle 45°/5°	15°	-	1
								3.00...20.59	-
								20.60...34.99	50
35.00...35.99								14	
36.00...36.99	12								
37.00...37.99	10								
38.00...38.50	8								
72-2043	32	53	122	\emptyset 29.7x1.693	\sphericalangle 45°/5°	15°	-	2	
							3.00...16.79	-	
							16.80...28.99	50	
							29.00...29.99	12	
							30.00...30.99	10	
31.00...31.75	8								

Alésages standards (rond, carré, six-pans) selon liste de prix. Autres alésages sur demande.
 Standardbohrungen (rund, vierkant, sechskant) gemäss Preisliste. Andere Bohrungen auf Anfrage.
 Standard bores (round, square, hexagonal) according to price list. Other bores on request.