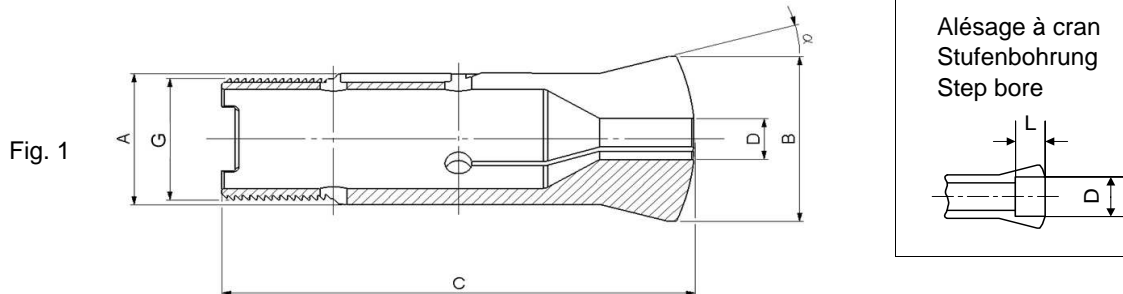
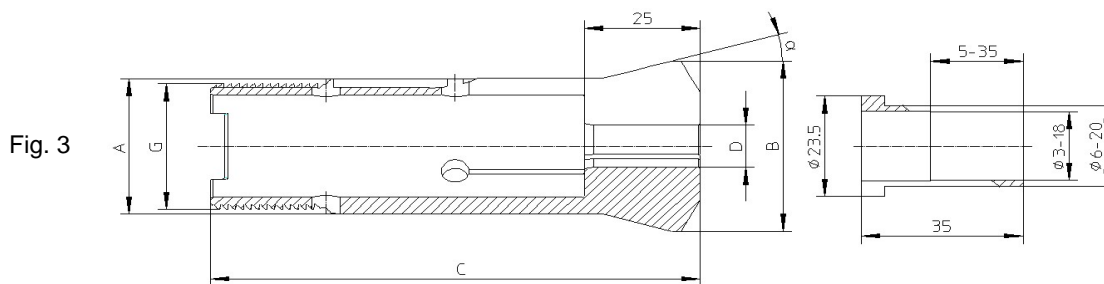
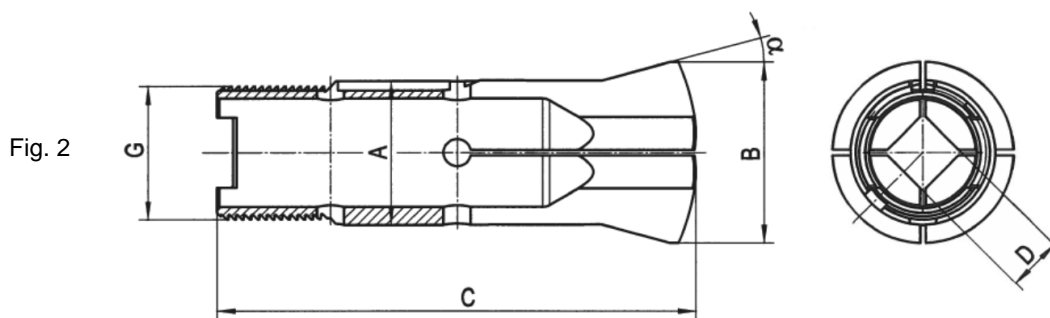


**Pinces tirées - Zugspannzangen - Pull-type collets**



Alésage à cran  
 Stufenbohrung  
 Step bore



Pince pour douilles  
 Spannzange für Hülsen  
 Collet for sleeves

Douille 85-53310  
 Hülse 85-53310  
 Sleeve 85-53310

Type	Art.	A	B	C	G	$\alpha$	D min.-max	L	Fig.
HB32	72-2010	32	40	106	$\emptyset$ 29.7x1.693 $\nabla$ 45°/5°	15°	6.00...20.00	-	3
	72-2030	32	40	106	$\emptyset$ 29.7x1.693 $\nabla$ 45°/5°	15°	3.00...23.79	-	1
							23.80...27.99	44	
							28.00...29.99	12	
							30.00...32.00	8	
	72-2040	32	40	106	$\emptyset$ 29.7x1.693 $\nabla$ 45°/5°	15°	3.00...20.59	-	1
							20.60...23.99	44	
							24.00...25.49	12	
							25.50...27.00	8	
	72-2040	32	40	106	$\emptyset$ 29.7x1.693 $\nabla$ 45°/5°	15°	3.00...16.99	-	2
							17.00...19.79	44	
							19.80...20.99	12	
							21.00...22.60	8	

Alésages standards (rond, carré, six-pans) selon liste de prix. Autres alésages sur demande.  
 Standardbohrungen (rund, vierkant, sechskant) gemäss Preisliste. Andere Bohrungen auf Anfrage.  
 Standard bores (round, square, hexagonal) according to price list. Other bores on request.