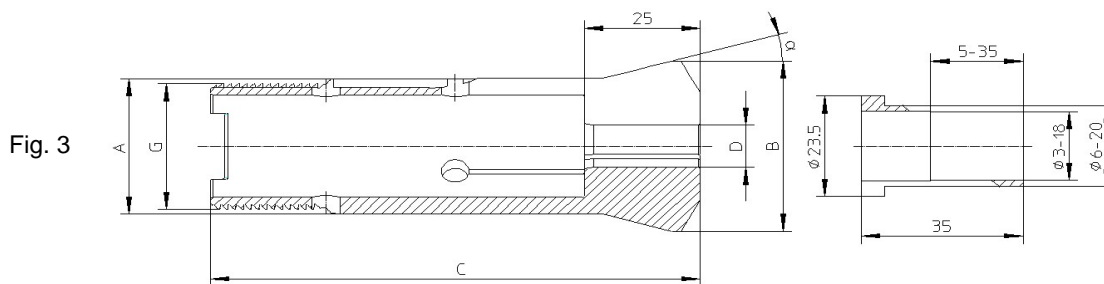
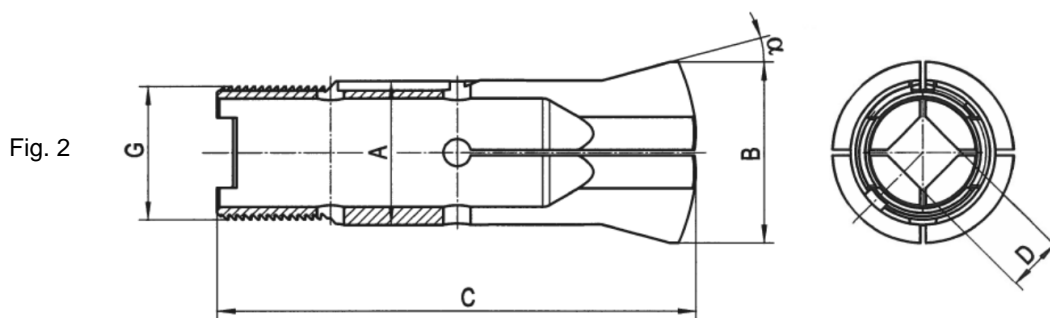
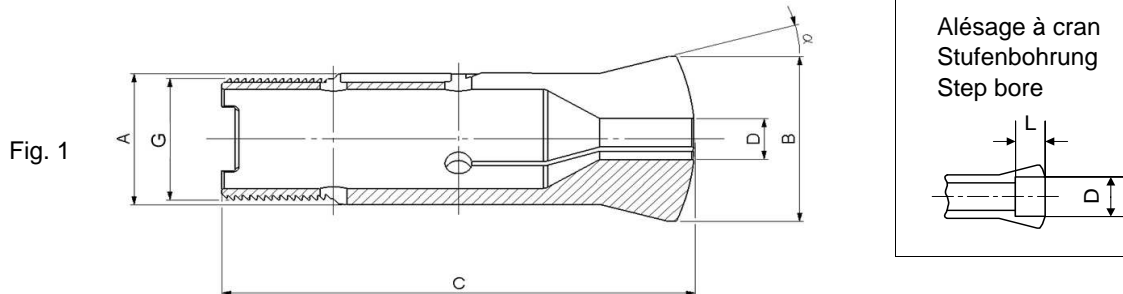


Pinces tirées - Zugspannzangen - Pull-type collets



Pince pour douilles
 Spannzange für Hülsen
 Collet for sleeves

Douille 85-53310
 Hülse 85-53310
 Sleeve 85-53310

Type	Art.	A	B	C	G	α	D min.-max	L	Fig.
HB32	72-2010	32	40	106	\emptyset 29.7x1.693 ∇ 45°/5°	15°	6.00...20.00	-	3
	72-2030	32	40	106	\emptyset 29.7x1.693 ∇ 45°/5°	15°	3.00...23.79	-	1
							23.80...27.99	44	
							28.00...29.99	12	
							30.00...32.00	8	
	72-2040	32	40	106	\emptyset 29.7x1.693 ∇ 45°/5°	15°	3.00...20.59	-	2
							20.60...23.99	44	
							24.00...25.49	12	
							25.50...27.00	8	
	72-2040	32	40	106	\emptyset 29.7x1.693 ∇ 45°/5°	15°	3.00...16.99	-	2
							17.00...19.79	44	
							19.80...20.99	12	
							21.00...22.60	8	

Alésages standards (rond, carré, six-pans) selon liste de prix. Autres alésages sur demande.
 Standardbohrungen (rund, vierkant, sechskant) gemäss Preisliste. Andere Bohrungen auf Anfrage.
 Standard bores (round, square, hexagonal) according to price list. Other bores on request.