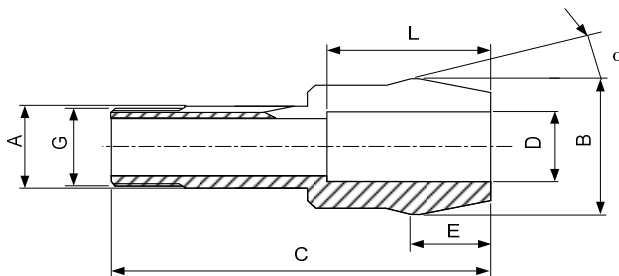


**Pinces tirées - Zugspannzangen - Pull-type collets**

Fig. 1



Alésage à cran  
 Stufenbohrung  
 Step bore

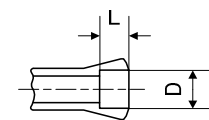
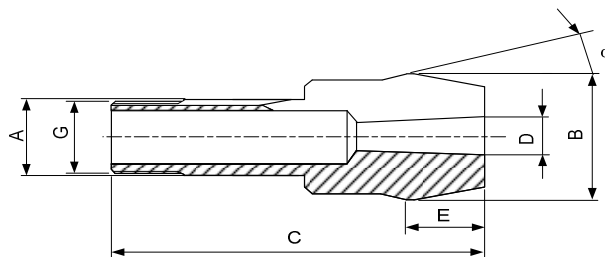


Fig. 2



Type	Art.	A	B	C	E	G	$\alpha$	D min-max	L	Fig.	
B32/B45	<b>72-2005</b>	32	53	148.5	32.5	$\emptyset$ 29.7x1.693	$\sphericalangle$ 45°/5°	15°	1.00...24.00 24.01...40.00	- 80	1
	<b>72-93409</b> 26)	32	53	148.5	32.5	$\emptyset$ 29.7x1.693	$\sphericalangle$ 45°/5°	15°	Morse DIN228	-	2
	<b>72-93410</b> 26)	32	53	148.5	32.5	$\emptyset$ 29.7x1.693	$\sphericalangle$ 45°/5°	15°	Morse DIN228	-	2
	<b>72-93411</b> 26)	32	53	148.5	32.5	$\emptyset$ 29.7x1.693	$\sphericalangle$ 45°/5°	15°	Morse DIN228	-	2
	<b>72-93412</b> 26)	32	53	173	57	$\emptyset$ 29.7x1.693	$\sphericalangle$ 45°/5°	15°	Morse DIN228	107	2

Alésages standards (rond, carré, six-pans) selon liste de prix. Autres alésages sur demande.  
 Standardbohrungen (rund, vierkant, sechskant) gemäss Preisliste. Andere Bohrungen auf Anfrage.  
 Standard bores (round, square, hexagonal) according to price list. Other bores on request.

26) Sur demande - Auf Anfrage - On request