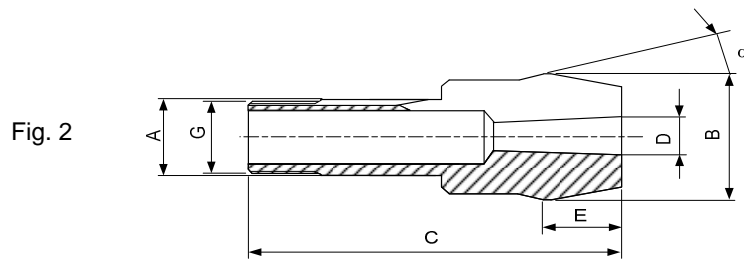
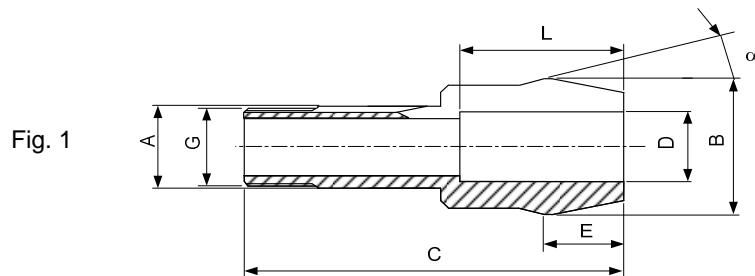
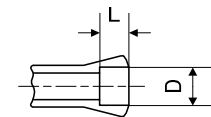


Pinces tirées - Zugspannzangen - Pull-type collets



Alésage à cran
 Stufenbohrung
 Step bore



Type	Art.	A	B	C	E	G	α	D min-max	L	Fig.
B32/B45	72-2005	32	53	148.5	32.5	\emptyset 29.7x1.693 ∇ 45°/5°	15°	1.00...24.00 24.01...40.00	- 80	1
	72-93409 26)	32	53	148.5	32.5	\emptyset 29.7x1.693 ∇ 45°/5°	15°	Morse DIN228 MK-1	-	2
	72-93410 26)	32	53	148.5	32.5	\emptyset 29.7x1.693 ∇ 45°/5°	15°	Morse DIN228 MK-2	-	2
	72-93411 26)	32	53	148.5	32.5	\emptyset 29.7x1.693 ∇ 45°/5°	15°	Morse DIN228 MK-3	-	2
	72-93412 26)	32	53	173	57	\emptyset 29.7x1.693 ∇ 45°/5°	15°	Morse DIN228 MK-4	107	2

Alésages standards (rond, carré, six-pans) selon liste de prix. Autres alésages sur demande.
 Standardbohrungen (rund, vierkant, sechskant) gemäss Preisliste. Andere Bohrungen auf Anfrage.
 Standard bores (round, square, hexagonal) according to price list. Other bores on request.

26) Sur demande - Auf Anfrage - On request