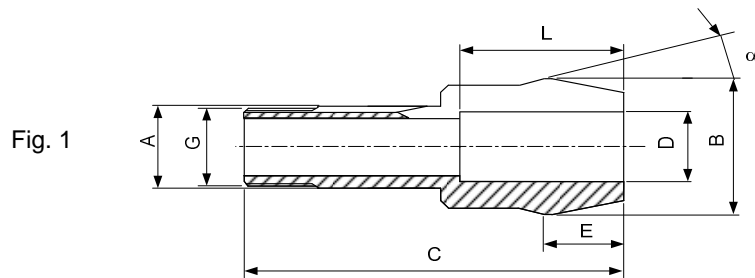
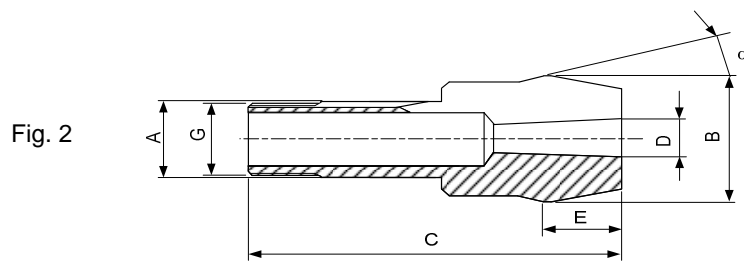
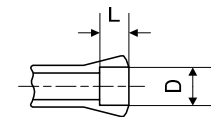


**Pinces tirées - Zugspannzangen - Pull-type collets**



Alésage à cran  
 Stufenbohrung  
 Step bore



Type	Art.	A	B	C	E	G	$\alpha$	D min-max	L	Fig.
B32/B45	<b>72-2005</b>	32	53	148.5	32.5	$\emptyset$ 29.7x1.693 $\nabla$ 45°/5°	15°	1.00...24.00 24.01...40.00	- 80	1
	<b>72-93409</b> 26)	32	53	148.5	32.5	$\emptyset$ 29.7x1.693 $\nabla$ 45°/5°	15°	Morse DIN228 MK-1	-	2
	<b>72-93410</b> 26)	32	53	148.5	32.5	$\emptyset$ 29.7x1.693 $\nabla$ 45°/5°	15°	Morse DIN228 MK-2	-	2
	<b>72-93411</b> 26)	32	53	148.5	32.5	$\emptyset$ 29.7x1.693 $\nabla$ 45°/5°	15°	Morse DIN228 MK-3	-	2
	<b>72-93412</b> 26)	32	53	173	57	$\emptyset$ 29.7x1.693 $\nabla$ 45°/5°	15°	Morse DIN228 MK-4	107	2

Alésages standards (rond, carré, six-pans) selon liste de prix. Autres alésages sur demande.  
 Standardbohrungen (rund, vierkant, sechskant) gemäss Preisliste. Andere Bohrungen auf Anfrage.  
 Standard bores (round, square, hexagonal) according to price list. Other bores on request.

26) Sur demande - Auf Anfrage - On request