

**Pinces tirées - Zugspannzangen - Pull-type collets**

Fig. 1



Fig. 2

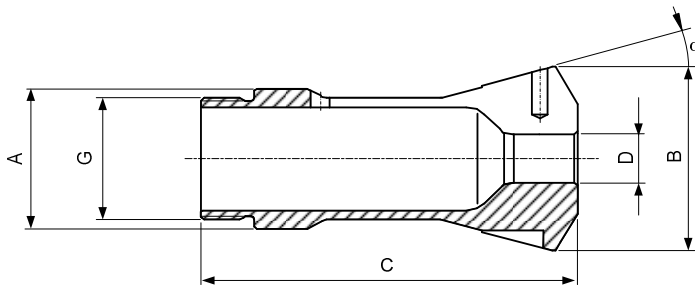
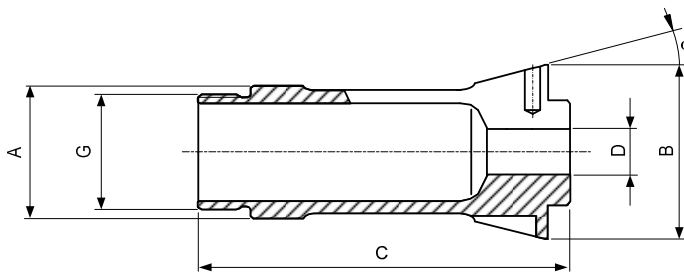
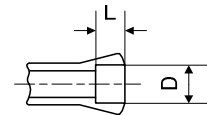


Fig. 3



Alésage à cran  
 Stufenbohrung  
 Step bore



| Type | Art.    | A  | B    | C   | E | G                | $\alpha$ | D min-max   | L                              | Fig. |
|------|---------|----|------|-----|---|------------------|----------|---|--------------------------------|------|
| B34  | 72-1820 | 34 | 42   | 90  | - | M30x1 à gauche   | 16°      | 3.00...25.00  | -                              | 3    |
| B45  | 72-199  | 45 | 53   | 115 | - | M42x1.5          | 15°      | 1.00...36.00<br>36.01...40.99<br>41.00...41.99<br>42.00...42.99<br>43.00...43.99<br>44.00...45.00 | -<br>53<br>14<br>12<br>10<br>8 | 1    |
| B46  | 72-2007 | 46 | 60.3 | 120 | - | M40x1.5 à gauche | 15°      | 6.00...33.00  | -                              | 2    |

Alésages standards (rond, carré, six-pans) selon liste de prix. Autres alésages sur demande.  
 Standardbohrungen (rund, vierkant, sechskant) gemäss Preisliste. Andere Bohrungen auf Anfrage.  
 Standard bores (round, square, hexagonal) according to price list. Other bores on request.