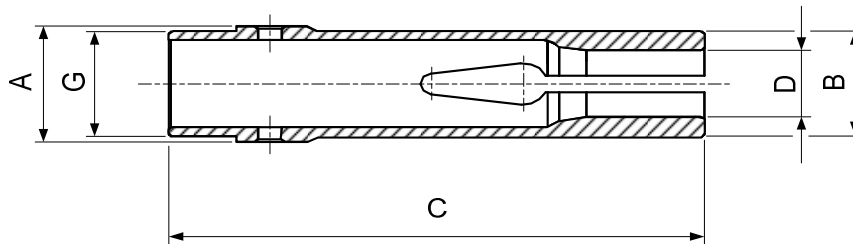

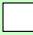
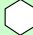


**Pinces d'avance - Vorschubzangen - Feedfingers**


Type	Art.	A	B	C	G	D min.-max.			
A17.9	<b>71-335</b>	17.9	17.5	70	M16x0.75	1.5-14.0			2.0-12.0
	<b>71-213</b> 13)	17.9	17.5	70	M16x0.75				
A22.8	<b>71-1922</b>	22.8	20.5	98	M20x0.75	2.5-17.0			3.0-14.0
	<b>71-2011</b> 13)	22.8	20.5	98	M20x0.75				
A25	<b>71-2018</b>	25	25	90	M24x1	3.0-20.0			3.0-17.0
A27.7	<b>71-2000</b>	27.7	25.3	116	M25x1	2.0-21.0	2.0-14.9		2.0-18.2
A35	<b>71-2019</b> 26)	35	33	118	M33x1.5	3.0-26.0			3.0-23.0

Alésages standards (rond, carré, six-pans) selon liste de prix. Autres alésages sur demande.  
 Standardbohrungen (rund, viereck, sechskant) gemäss Preisliste. Andere Bohrungen auf Anfrage.  
 Standard bores (round, square, hexagonal) according to price list. Other bores on request.

- 13) Pince d'avance maîtresse  
 Vorschubzangen-Körper  
 Master feedfinger
- 26) Sur demande  
 Auf Anfrage  
 On request