

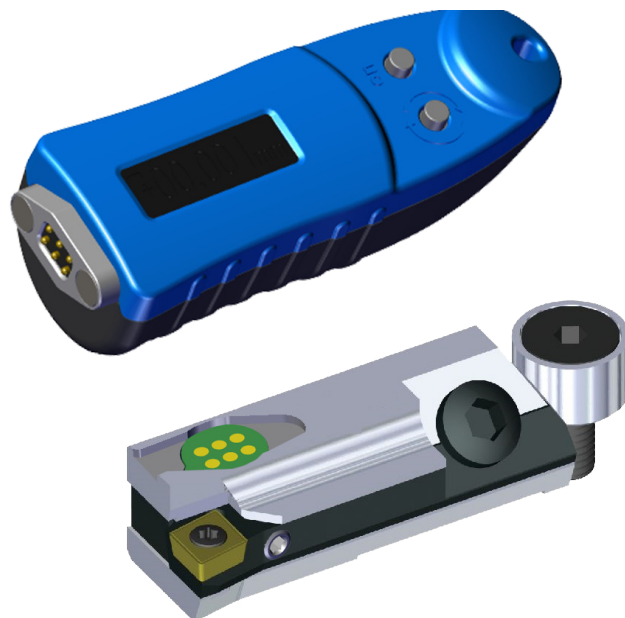
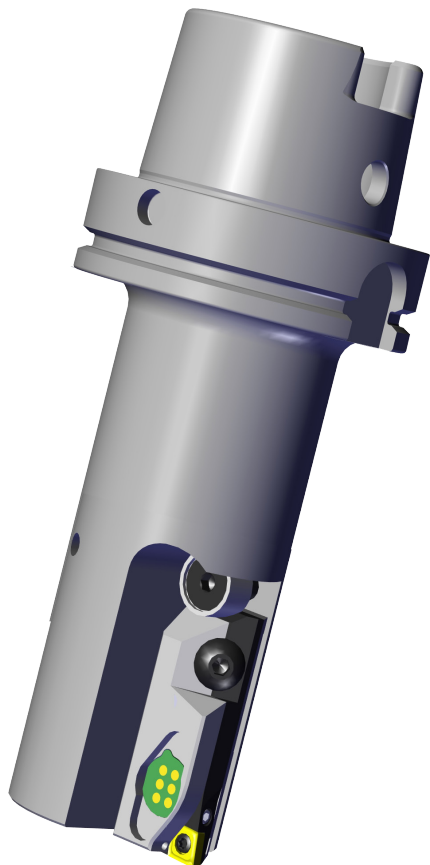
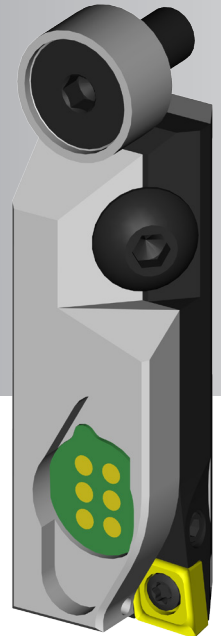
Digital adjustable Fine Boring Module

- Easy handling
- Precise adjustment
- No backlash
- Maintenance-free

Fine boring unit with precise, digital adjustment mechanism

The digital setting achieves very high accuracy. The unique, easy handling reduces unproductive time, a separate external adjustment on a presetter is eliminated. Error-free precise adjustments are possible directly on the machine. A swing between presetting and machine is eliminated. This achieves maximum quality and productivity gains.

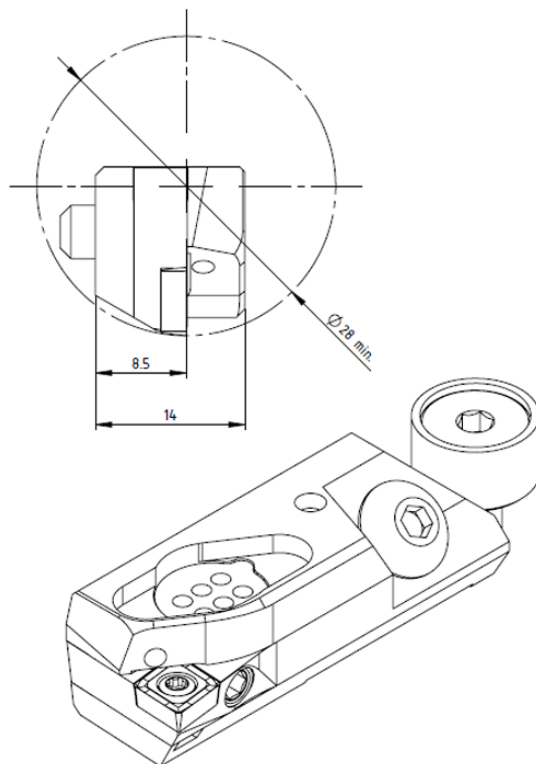
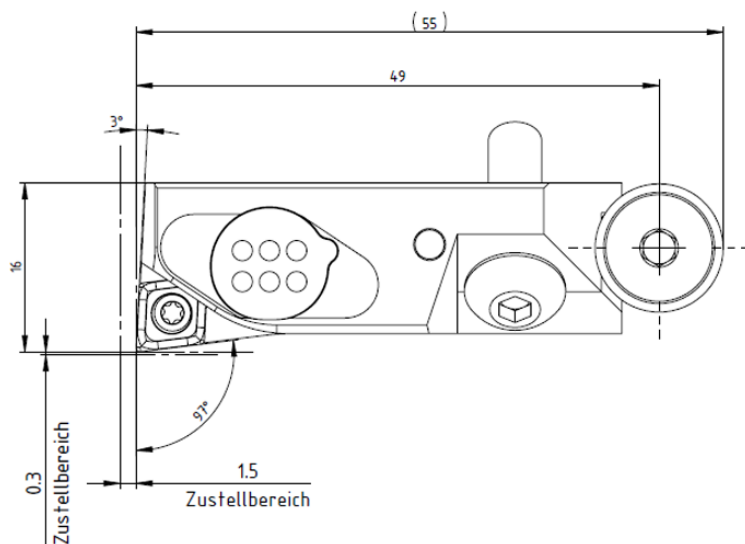
The dimensions of the digital and analog modules are identical, which ensures an exchange.



Technical specifications:

- Fine adjustment digital display 0.001mm
- Radial adjustment: min. 0.4 mm
- Axial length adjustment: 1.5 mm
- Speed: max. 10.000 rpm
- Internal cooling directly on the tool cutting edge

Dimensionen / Einbaumasse



SWISSETOOLS

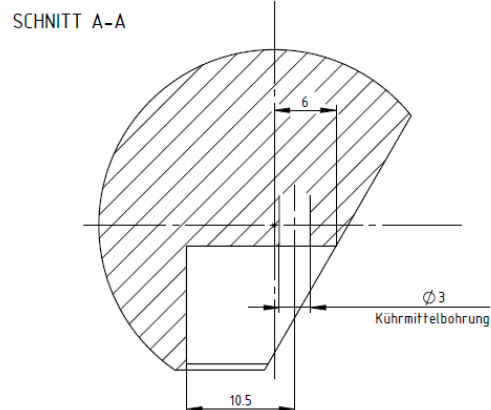
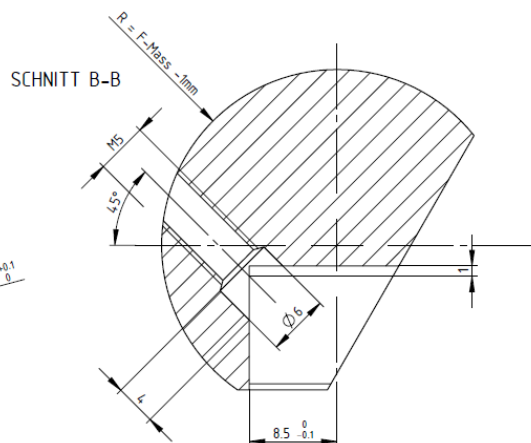
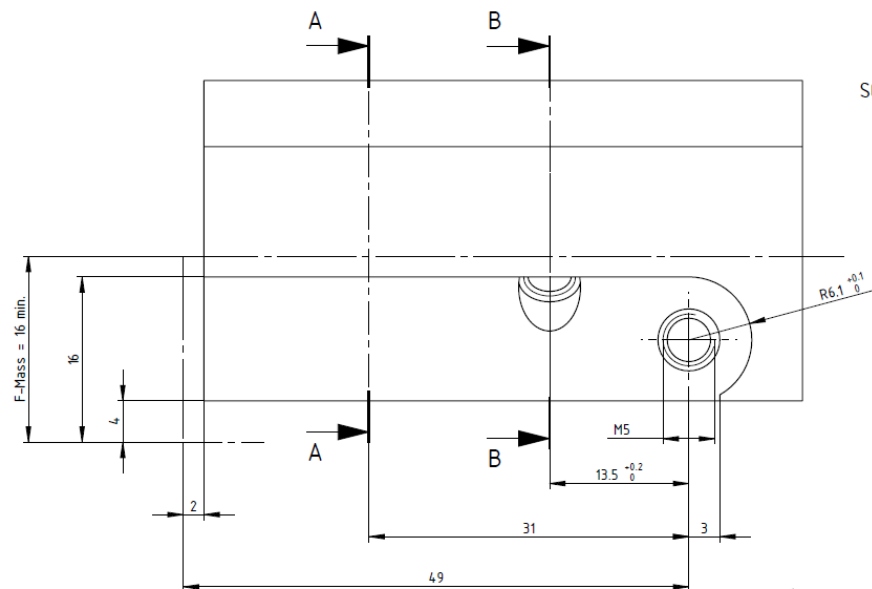
digitaler Kurzklemmhalter / Digital fine boring module
KKH.WCA.016.045

Wendeplatte: CC.. 06 02..

Gewicht: 50g

Datum: 11.01.2018

Schnittstelle / Module interface



SWISSETOOLS

Kurzklemmhalter / Digital fine boring module
KKH.WCA.016.045

Wendeplatte: CC.. 06 02..

Gewicht: 30.25g