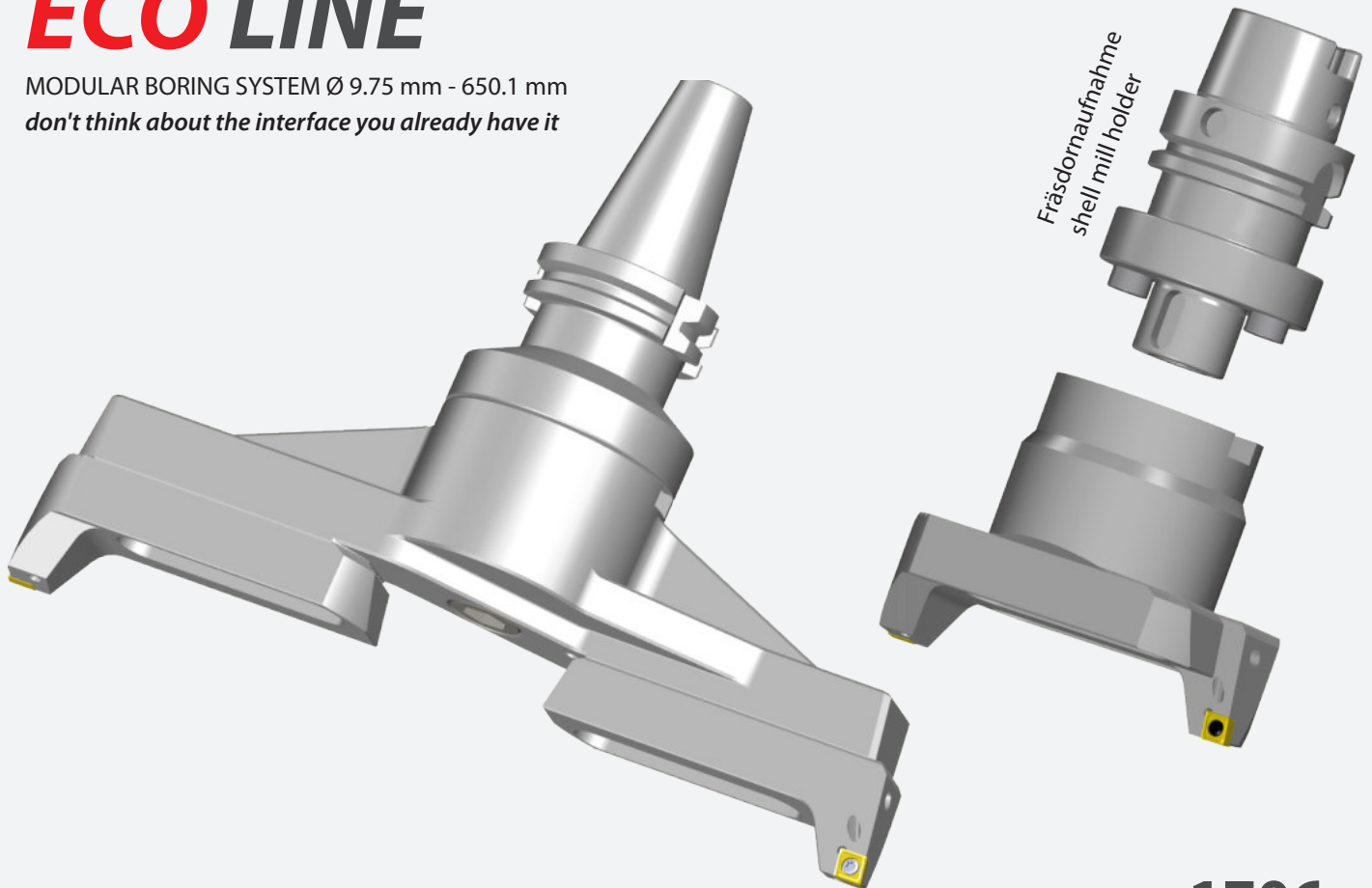


## ECO LINE

MODULAR BORING SYSTEM Ø 9.75 mm - 650.1 mm  
*don't think about the interface you already have it*



1706

**Ausdrehset Ø9.75-30.1**

**Fine boring set Ø9.75-30.1**

- erweiterbar von Ø3 bis Ø88.1
- Schnittstelle ER32 DIN6499

- can be upgraded from Ø3 up to Ø88.1
- connection ER32 DIN 6499



Bestell-Nr. / Order number	Ø D / System	Ø A min.	Ø A max.	L	Ausdrehkopf / Fine boring head
<b>SMART ER32</b>					
SE1_E32.A55.001	55 / ER32	9.75	30.1	60	E32_A55.K01.060

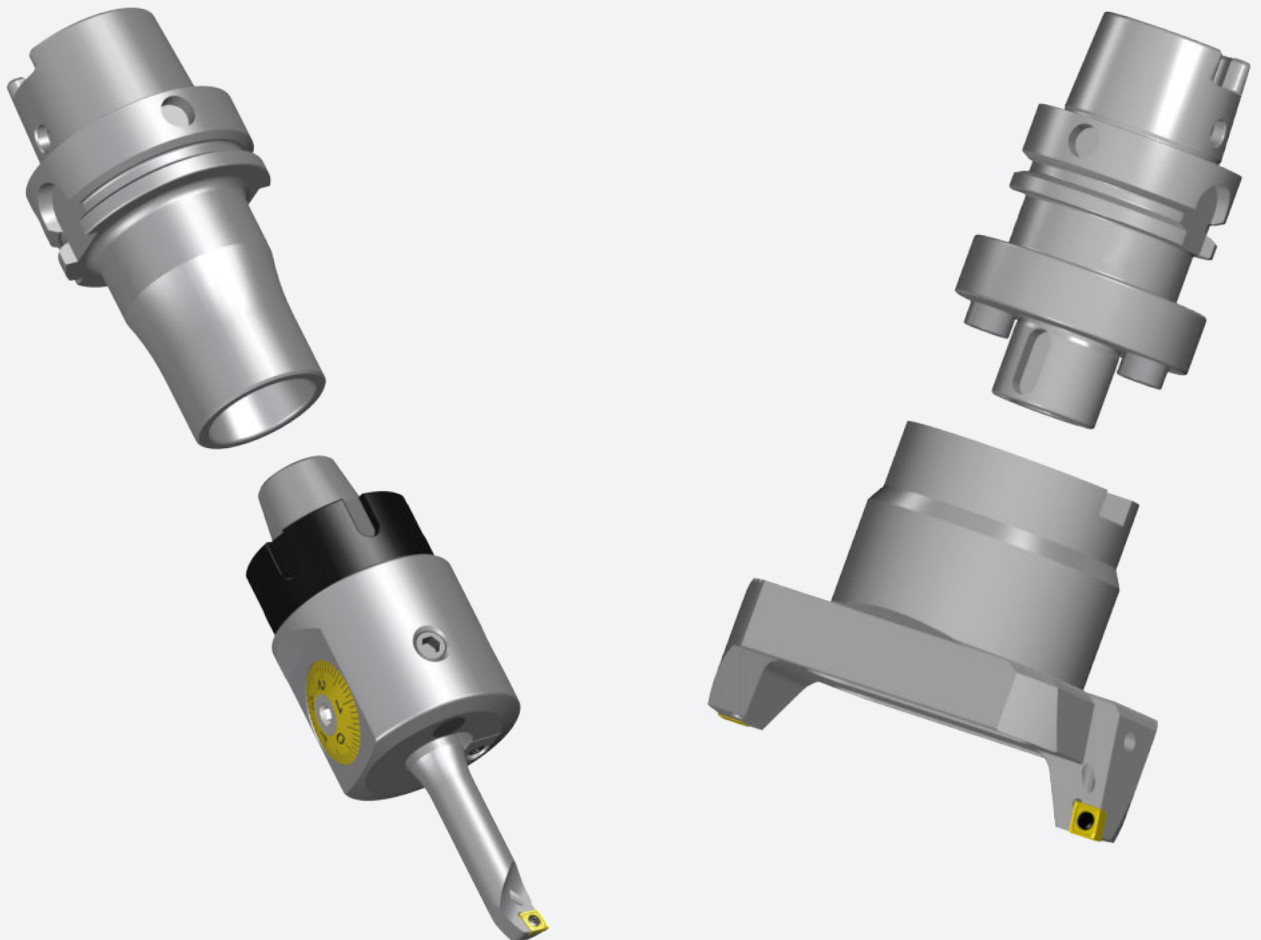
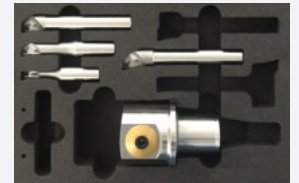
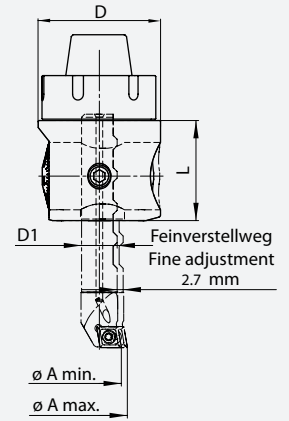
- Werkzeug in einem Spannzangenfutter spannen.
- \_WCA. = CC 06 02 .. Wendepplatten

- Clamp tool in a collet chuck.
- \_WCA. = CC 06 02 .. inserts

**Inhalt**

**Content**

1 Koffer / Case					
1 Ausdrehkopf / Fine boring head					E32_A55.K01.060
1 Ausdrehstahl / Boring bar			Ø9.75-15.1		B10_WCA.K11.075
1 Ausdrehstahl / Boring bar			Ø14.75-20.1		B15_WCA.K11.090
1 Ausdrehstahl / Boring bar			Ø19.75-25.1		B20_WCA.K11.105
1 Ausdrehstahl / Boring bar			Ø24.75-30.1		B25_WCA.K11.115
1 Inbusschlüssel / Allen wrench			SW5		
1 Torx-Schlüssel / Torx driver			T7		



**Feinbohrköpfe Ø23.9-87.1**

**Fine boring heads Ø23.9-87.1**



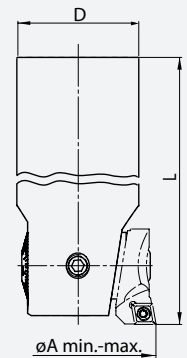
- Durchmessereinstellung mit geringstem Umkehrspiel
- Zustellgenauigkeit von 0.01mm resp. über Nonius 0.002mm im Durchmesser
- mit Innenkühlung

- diameter setting with minimal reversal backlash
- 0.01mm diametrical adjustment resp. 0.002mm by nonius
- with inner coolant supply

Bestell-Nr. / Order number	Ø D/ System	Ø A min.	Ø A max.	L	Wendeplattenhalter / Insert holder
U20_F20.K21.150	20 / ER32	23.9	31.1	150	F20_WCA.001.005
U25_F25.K21.170	25 / ER40	30.9	40.1	170	F25_WCA.001.006

- Werkzeug in einem Spannzangen- oder Hydrodehnfutter spannen.
- \_WCA. = CC 06 02 .. Wendeplatten
- **inklusive Wendeplattenhalter**

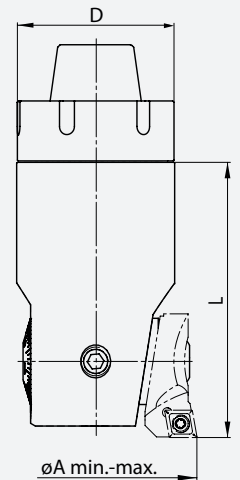
- Clamp tool in a collet or hydraulic chuck.
- \_WCA. = CC 06 02 .. inserts
- **insert holder included**



Bestell-Nr. / Order number	Ø D/ System	Ø A min.	Ø A max.	L	Wendeplattenhalter / Insert holder
E25_F32.K21.065	32 / ER25	39.9	51.1	65	F32_WCA.001.007
E32_F42.K21.075	42 / ER32	50.9	67.1	75	F42_WCA.001.009
E40_F55.K21.085	55 / ER40	66.9	87.1	85	F55_WCA.001.013

- Werkzeug in einem Spannzangenfutter spannen.
- \_WCA. = CC 06 02 .. Wendeplatten
- **inklusive Wendeplattenhalter**

- Clamp tool in a collet chuck.
- \_WCA. = CC 06 02 .. inserts
- **insert holder included**



**Zweischneiderköpfe Ø23.5-87.1**

**Twin cutter boring heads Ø23.5-87.1**



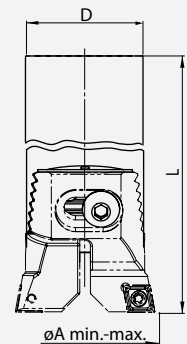
- mit Innenkühlung

- with inner coolant supply

Bestell-Nr. / Order number	Ø D/ System	Ø A min.	Ø A max.	L	Wendeplattenhalter / Insert holder
U20_Z20.K23.150	20 / ER32	23.5	31.1	150	Z20_WCA.B11.015
U25_Z25.K23.170	25 / ER40	29.5	40.1	170	Z25_WCA.B11.016

- Werkzeug in einem Spannzangen- oder Hydrodehnfutter spannen.
- \_WCA. = CC 06 02 .. Wendeplatten
- **inklusive Wendeplattenhalter**

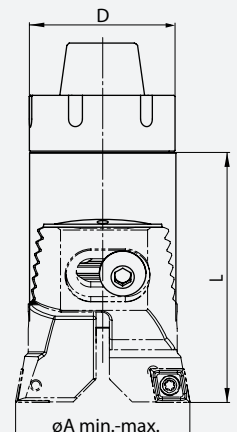
- Clamp tool in a collet or hydraulic chuck.
- \_WCA. = CC 06 02 .. inserts
- **insert holder included**



Bestell-Nr. / Order number	Ø D/ System	Ø A min.	Ø A max.	L	Wendeplattenhalter / Insert holder
E25_Z32.K23.065	32 / ER25	39.5	51.1	65	Z32_WCB.B11.021
E32_Z42.K23.075	42 / ER32	49.5	67.1	75	Z42_WCB.B11.028
E40_Z55.K23.085	55 / ER40	65.5	87.1	85	Z55_WCC.B11.037

- Werkzeug in einem Spannzangenfutter spannen.
- \_WCB. = CC 09 T3 .. Wendeplatten
- \_WCC. = CC 12 04 .. Wendeplatten
- **inklusive Wendeplattenhalter**

- Clamp tool in a collet chuck.
- \_WCB. = CC 09 T3 .. inserts
- \_WCC. = CC 12 04 .. inserts
- **insert holder included**

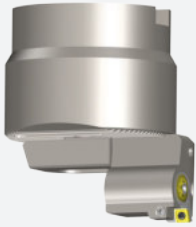


**Feinbohrbrückenwerkzeuge  
Ø85.5-650.1**

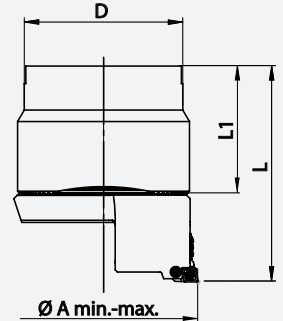
**Fine boring bridges tools  
Ø85.5-650.1**

- Durchmessereinstellung mit geringstem Umkehrspiel
- Zustellgenauigkeit von 0.01mm im Durchmesser
- mit Innenkühlung

- diameter setting with minimal reversal backlash
- 0.01mm diametrical adjustment
- with inner coolant supply

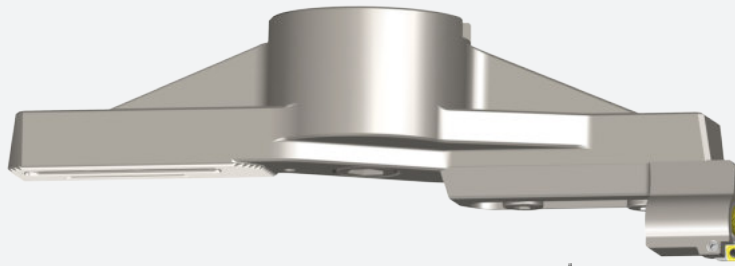


Bestell-Nr. / Order number	Ø D/ System	Ø A min.	Ø A max.	L	Feinbohraufsatz / Fine bore adapter
D32_F01.085.098	78 / D32	85.5	140.1	98	F01_WCA.B11.050
D32_F02.139.098	78 / D32	139.5	220.1	98	F02_WCA.B11.050
D32_F02.219.098	78 / D32	219.5	310.1	98	F02_WCA.B11.050
D40_F02.309.108	88 / D40	309.5	395.1	108	F02_WCA.B11.050
D40_F02.394.108	88 / D40	394.5	480.1	108	F02_WCA.B11.050
D60_F02.479.118	128 / D60	479.5	565.1	118	F02_WCA.B11.050
D60_F02.564.118	128 / D60	564.5	650.1	118	F02_WCA.B11.050



- Werkzeug in einer Fräsdorn- oder Messerkopfaufnahme spannen.
- \_WCA. = CC 06 02 ..Wendeplatten
- **inklusive Feinbohraufsatz (F01/F02)**

- Clamp tool in a shell mill holder.
- \_WCA. = CC 06 02 .. inserts
- **Fine boring adapter included (F01/F02)**

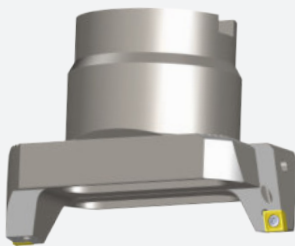


**Zwischneiderbrückenwerkzeuge Ø85.5-650.1**

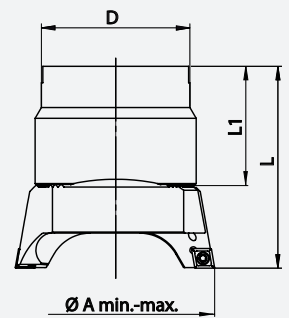
**Twin cutter bridge tools  
Ø85.5-650.1**

- mit Innenkühlung

- with inner coolant supply



Bestell-Nr. / Order number	Ø D/ System	Ø A min.	Ø A max.	L	Wendeplattenhalter / Insert holder
D32_Z01.085.098	78 / D32	85.5	140.1	98	Z01_WCC.B11.050
D32_Z02.139.098	78 / D32	139.5	220.1	98	Z02_WCC.B11.050
D32_Z02.219.098	78 / D32	219.5	310.1	98	Z02_WCC.B11.050
D40_Z02.309.108	88 / D40	309.5	395.1	108	Z02_WCC.B11.050
D40_Z02.394.108	88 / D40	394.5	480.1	108	Z02_WCC.B11.050
D60_Z02.479.118	128 / D60	479.5	565.1	118	Z02_WCC.B11.050
D60_Z02.564.118	128 / D60	564.5	650.1	118	Z02_WCC.B11.050



- Werkzeug in einer Fräsdorn- oder Messerkopfaufnahme spannen.
- \_WCC. = CC 12 04 ..Wendeplatten
- **inklusive Wendeplattenhalter (Z01/Z02)**

- Clamp tool in a shell mill holder.
- \_WCC. = CC 12 04 .. inserts
- **insert holder included (Z01/Z02)**

