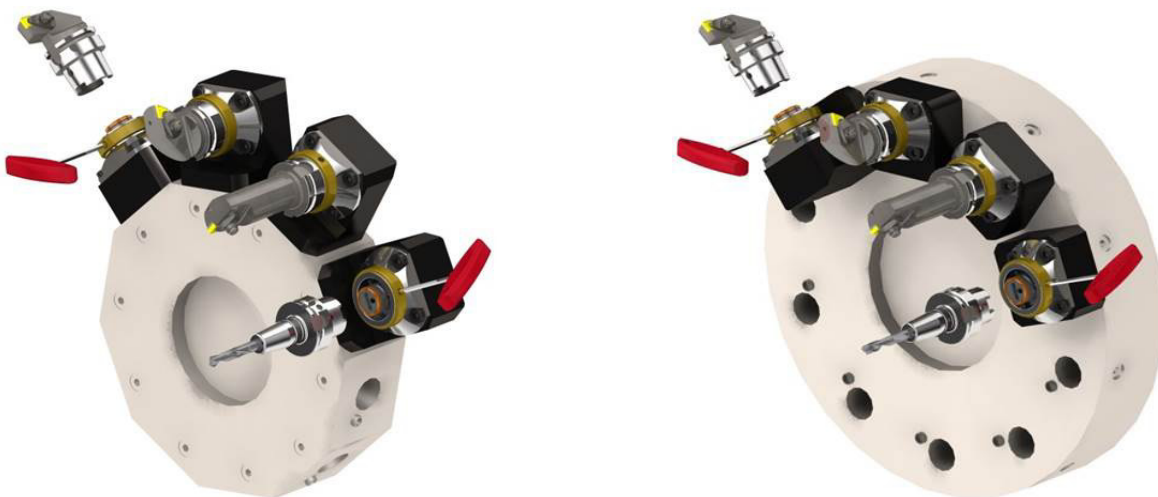


Dear Ladies and Gentlemen,

From now on, our [QUICK-CHANGE-CONFIGURATOR](#) makes it even easier to assemble the right tool holders for the desired machine type.

The Configurator is constantly being expanded to allow even more customers to benefit from the productivity of our Quick Change System, which has been [successfully used by well-known companies for years](#).

- Increase productivity by reducing non-productive time
- Very quick tool changing time
- Perfect repeatability with fixed tool geometry
- Usable for all machine brands
- Flexible with HSK, PSC and KM tools
- Cost efficient

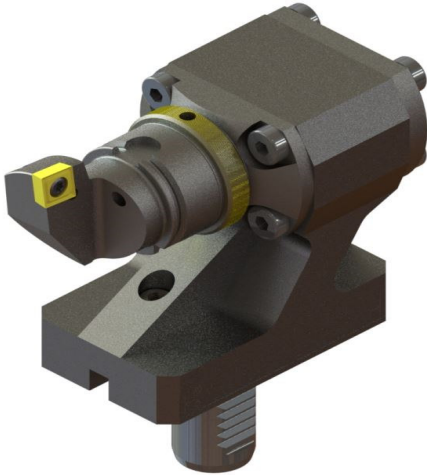
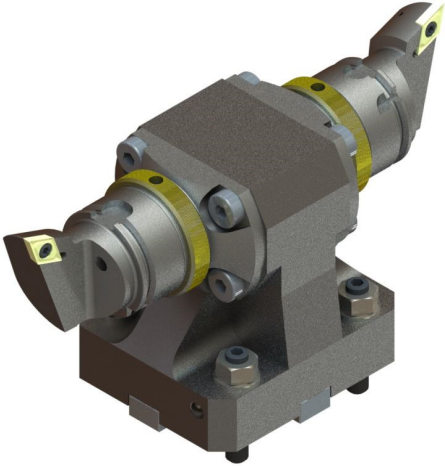
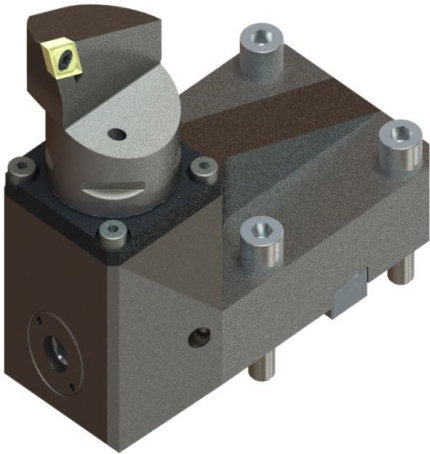
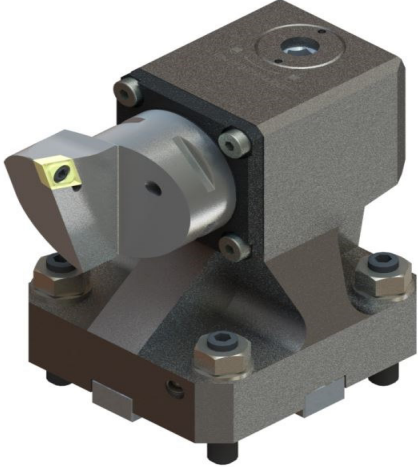
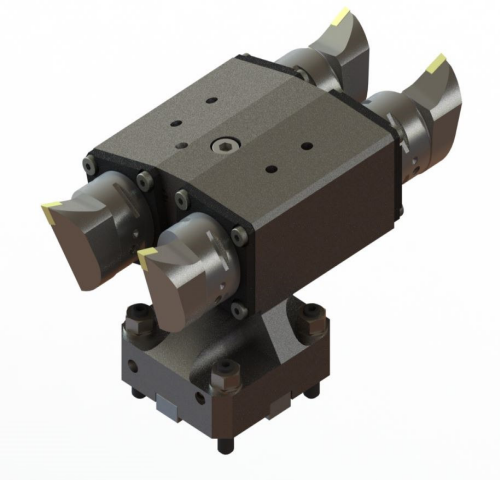


Turret types: disc turret and radial turret

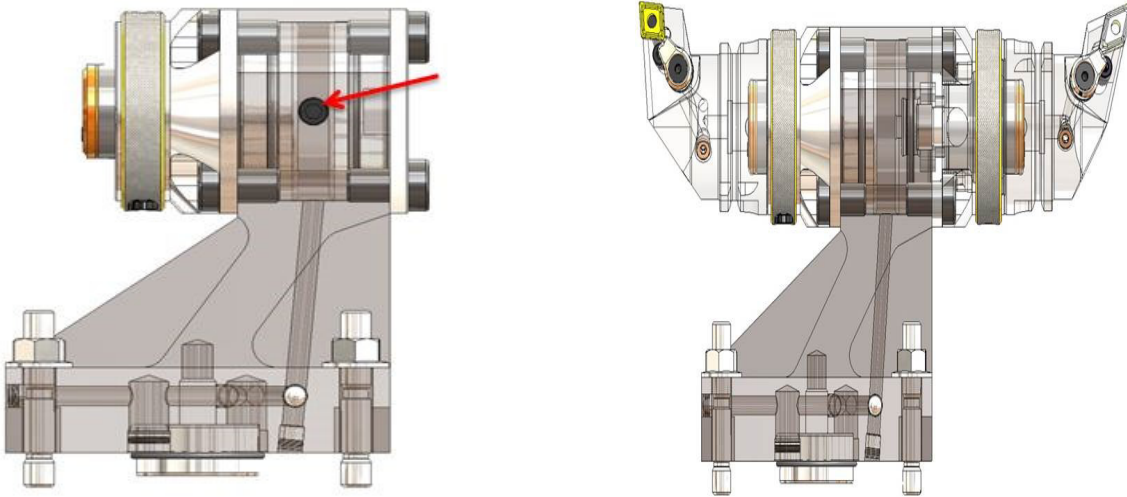
Machine-adapted tool holders are available as standard products for turret interfaces from the following manufacturers:

BMT, VDI, Hardinge, Nakamura, Mazak, Mori-Seiki, Okuma, Doosan and by the constant extension of our range, further interfaces are available on request.

Holder types



- All tool holders have internal cooling
- For semi-indexing, intermediate stations have a separate coolant circuit
- Even with 180 ° rotation, the coolant flow is guaranteed
- External cooling can be optionally added



In addition to the QUICK-CHANGE-CONFIGURATOR, there is a [short and clear inquiry form](#), on which you can add machine data in order to receive a suitable offer for our flexible and efficient Quick-Change-System.

Impressum

SWISS TOOL SYSTEMS AG
Wydenstrasse 28
CH-8575 Bürglen
Phone: +41 (0)71 634 85 20
Fax: +41 (0)71 634 85 29
www.swisstools.org